

Leonardo Maintenance Hanger

Elstree Aerodrome



Project Highlights

Sector	Aviation
Procurement Route	Single-Stage D&B
Price	£5.6m
Programme	41 weeks
Location	Borehamwood

Key Features

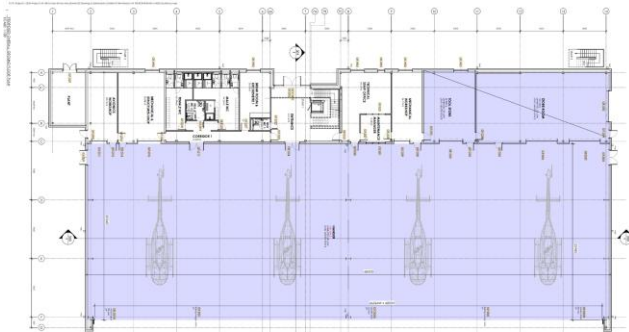
- Works completed within the designated airport grounds immediately next to the Helicopter training area and 100m from the live runway
- Provision of a new 500m long access road to serve the facility
- Lime / Cement ground stabilisation

Project Summary

A new build hangar, providing an in-line maintenance facility for a premier helicopter manufacturer. As well as internal space for 4nr helicopters there are offices and mechanical workshops. External works include parking spaces for 37nr vehicles and concrete aprons to the front of the hangar allowing access to the 2nr helipads.



An engineered ground stabilisation scheme provided a solution for the clay-based subsoils and was required over the site footprint and full length of the access road. Drainage swales provided a sustainable solution to manage surface water, and a new foul water treatment plant was installed due to having no local sewer connection. A new 1000kVA electrical substation, new fire hydrants and water supply completed the service provision required on this contract



Project Works Overview

RIBA Stage 2 project overviews and outline specifications had to be developed and co-ordinated into full design by NCL, with many CDP elements involved. Exacting end user performance specifications needed to be met; with close liaison and engagement with their gantry crane installation that will to be fitted post PC.

